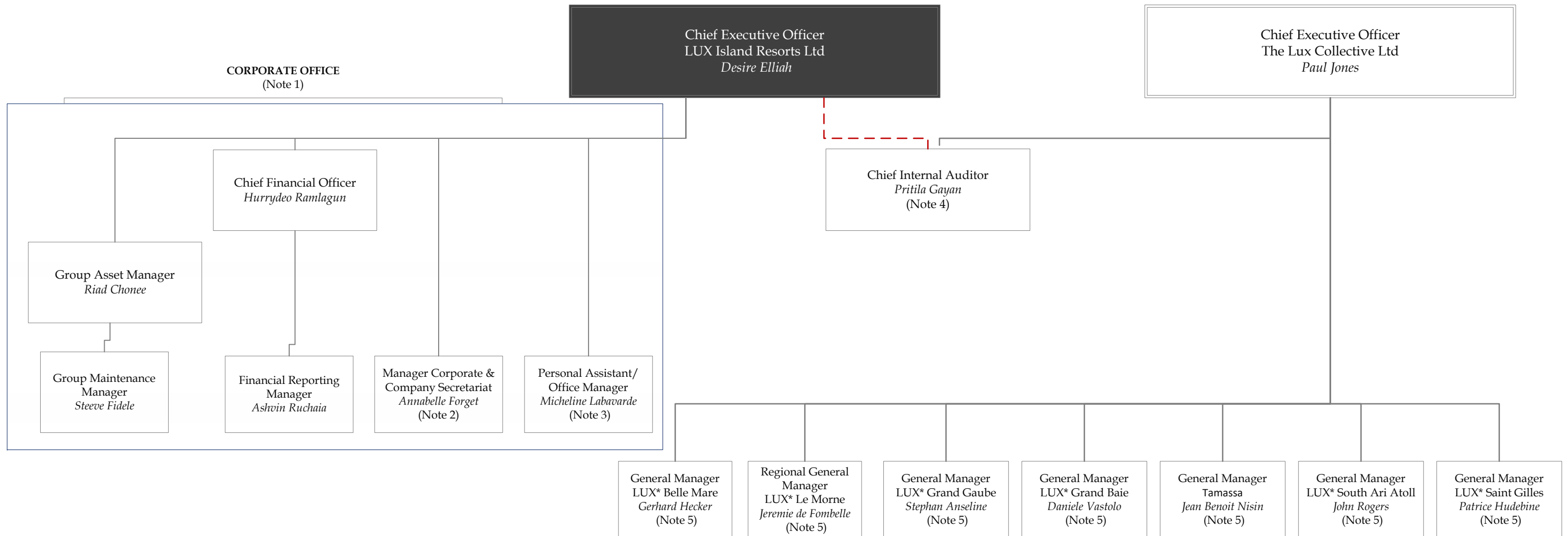


LUX Island Resorts Ltd

ORGANISATION CHART & REPORTING STRUCTURE



Note (1): LIR Corporate office (31 staff), based in Floréal, consolidates the accounts of the Group, treasury management, approves Capital expenditure and supervises the operations of the hotels from a reporting standpoint and ensures that the targets/ budgets set by the Board of LIR are achieved.

Note (2): The Manager Corporate & Company Secretariat will be responsible for all secretariat services of LIR group of companies.

Note (3): The Personal Assistant will also act as Office Manager.

Note (4): The Chief Internal Auditor is employed by The Lux Collective Ltd (TLC) and audits all hotels managed under the LUX brand and new brands developed by TLC. The CIA will also audit all operations under LIR and will, therefore, report administratively to both CEOs of LIR and TLC.

Note (5): The General Managers of LIR hotels are employed by the operating companies which are subsidiaries of Lux Island Resorts Ltd. The latter has a long term management contract with TLC for managing and operating its hotels. The General Managers report to the CEO of The Lux Collective Ltd for the day to day operations and they take instructions from the latter.

Note (6): The organisation chart is reviewed annually.

14 September 2022